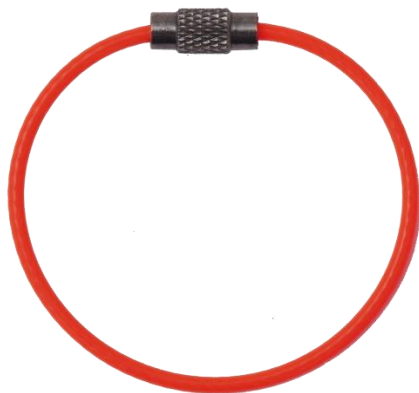




TS 90 001 10, TS 90 001 11, TS 90 001 13

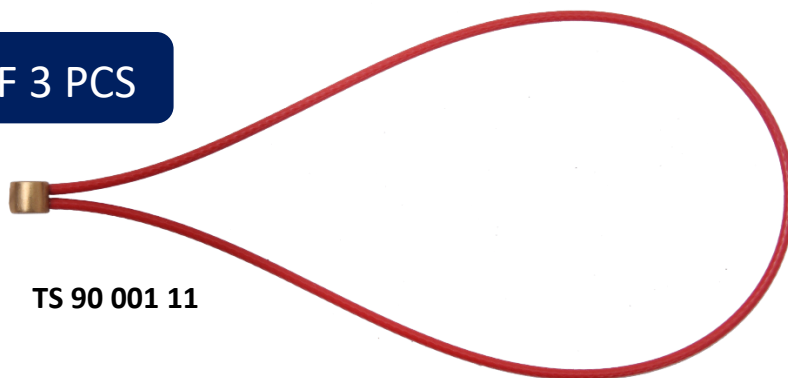
P.1/2



SET OF 3 PCS

TS 90 001 10

SET OF 3 PCS



TS 90 001 11









TS 90 001 13

SET OF 2 PCS

19 cm

| |
|----------------------|
| HS CODE |
| CARTON SIZE / PCS. |
| 78 x 38 x 23 cm / 50 |

| REF. | TS 90 001 10 | TS 90 001 11 | TS 90 001 13 |
|--|--|--|---|
| MAX. LG. | Ø 0.045 m | 0.14 m | 0.19 m |
| MAT. |  STEEL & PU |  STEEL & PU | PES 25 mm /  STEEL |
|   | 1.35 KG | 0.9 KG | 2.25 KG |
|  | 0.010 KG | 0.006 KG | 0.130 KG |

MAT.

Matière
 Material
 Material
 Materia
 Material

MAT.  

Matière et ouverture connecteur
 Material and gate opening of connector
 Material y apertura del conector
 Materiale e apertura del connettor
 Material und Öffnungssystem der Verbinder

Poids maximum des outils à accrocher
 Maximum weight of tools to attach
 Peso máximo de las herramientas para enganchar
 Peso maximale degli attrezzi ad appendere
 Höchstgewicht der zu befestigenden Werkzeuge